



**Crane Rental Association
Andrew Dixon, Sr. VP Trade & Business
Development
June 9, 2017**

Ports of Significance

CANADA





Green Head

Saint John

Cape Spencer

Five Fathom Hole

GUIDING PRINCIPLES

Drawn from the Canada Marine Act, our Guiding Principles underpin our unique goals and are reflected in the actions and initiatives we undertake to achieve them.

**Remain Financially
Self-Sufficient**

**Provide a Link to Rail and
Highway Infrastructure**

**Be Strategically Significant
to Canada's Trade**

**Have a Diverse
Cargo Base**

Port Statistics

Total Port traffic (in millions of metric tonnes)

	2012	2013	2014	2015	2016
Liquid Bulk Petroleum, LNG, molasses, etc.	26.5	25.9	22.1	24.4	25.1
Dry Bulk Potash, recycled Metals, petcoke, etc.	0.873	1.16	1.377	1.357	0.747
Break Bulk Forest products & project cargo	0.065	0.059	0.018	0.017	0.006
Containerized Miscellaneous dry & refrigerated cargo	0.312	0.497	0.565	0.611	0.573
Total	26.96	27.6	24.0	26.4	26.4



Terminals



Long Wharf

Cruise & Open Area for
Light Development
Break Bulk/Project Cargo

Pugsley A

Open Area for
Development

Marco Polo

Cruise

Diamond Jubilee Cruise Terminal

Cruise

Lower Cove

Open Area Available for
Development
Break Bulk/Project Cargo

Irving Oil & Canaport

Liquid Bulk

DP World Cargo Terminal

Containers, Dry Bulk, Break Bulk,
& Project Cargo

Modular
Fabrication
Building

American Iron & Metal (AIM)

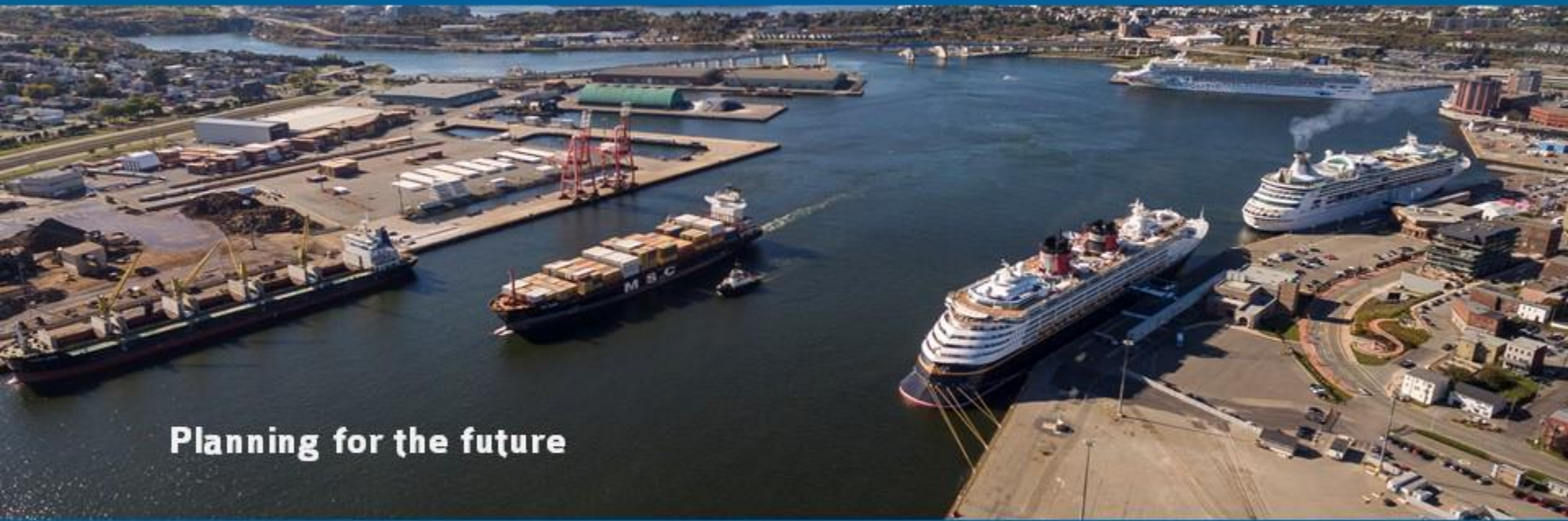
Dry Bulk

Lower West

Crosby's Molasses
Atlantic Towing
Land available for
development

Potash Corp -
Barrack Point
Dry Bulk

Modernization Project



Planning for the future



- Legend:**
- TERMINAL BOUNDARY
 - EXISTING TRACK
 - PROPOSED TRACK
 - TERMINAL SECURITY FENCE
 - HIGH MAST LIGHT
 - TOP PICK GROUNDED CONTAINERS
 - GROUNDED REEFERS
 - EXISTING BUILDING
 - PROPOSED BUILDING

- STATIC CAPACITY:**
2,150 TGS @ 5 HIGH + 10,750 TEUS
- KEY NOTES:**
- ① CONTAINER VESSEL
 - ② QUAY CRANES - 65 TONNE (3 TOTAL)
 - ③ CONTAINER YARD
 - ④ RADIATION PORTAL MONITOR (RPM)
 - ⑤ OCR PRE-GATE (2 LANE)
 - ⑥ IN-GATE LANE
 - ⑦ OCR OUT-GATE (2 LANE)
 - ⑧ INTERMODAL YARD (8,400M TRACK TOTAL)
 - ⑨ ADMINISTRATION BUILDING (20,000 SF)
 - ⑩ MAINTENANCE FACILITY
 - ⑪ FUELING FACILITY
 - ⑫ PUV PARKING
 - ⑬ EQUIPMENT PARKING
 - ⑭ REALIGNED ROAD
 - ⑮ RELOCATED PUMP HOUSE

A	2014.09.12	REVISION INFORMATION	REV	DATE
1				
2				
3				
4				
5				
6				
7				
8				
9				
10				
11				
12				
13				
14				
15				
16				



Contract No:
Logo and information of consultant:



Stamp:

Design by: LJP Check by: HSR
Drawn by: AAT Approved by: LWF

Project: ROCNEY AND NAVY ISLAND TERMINAL MODERNIZATION PRE-FEASIBILITY STUDY

Title: CONTAINER TERMINAL CONCEPT PLAN PHASE 1 - TOP PICK ONE BERTH WEST

Format: Title Scale: 1:2000

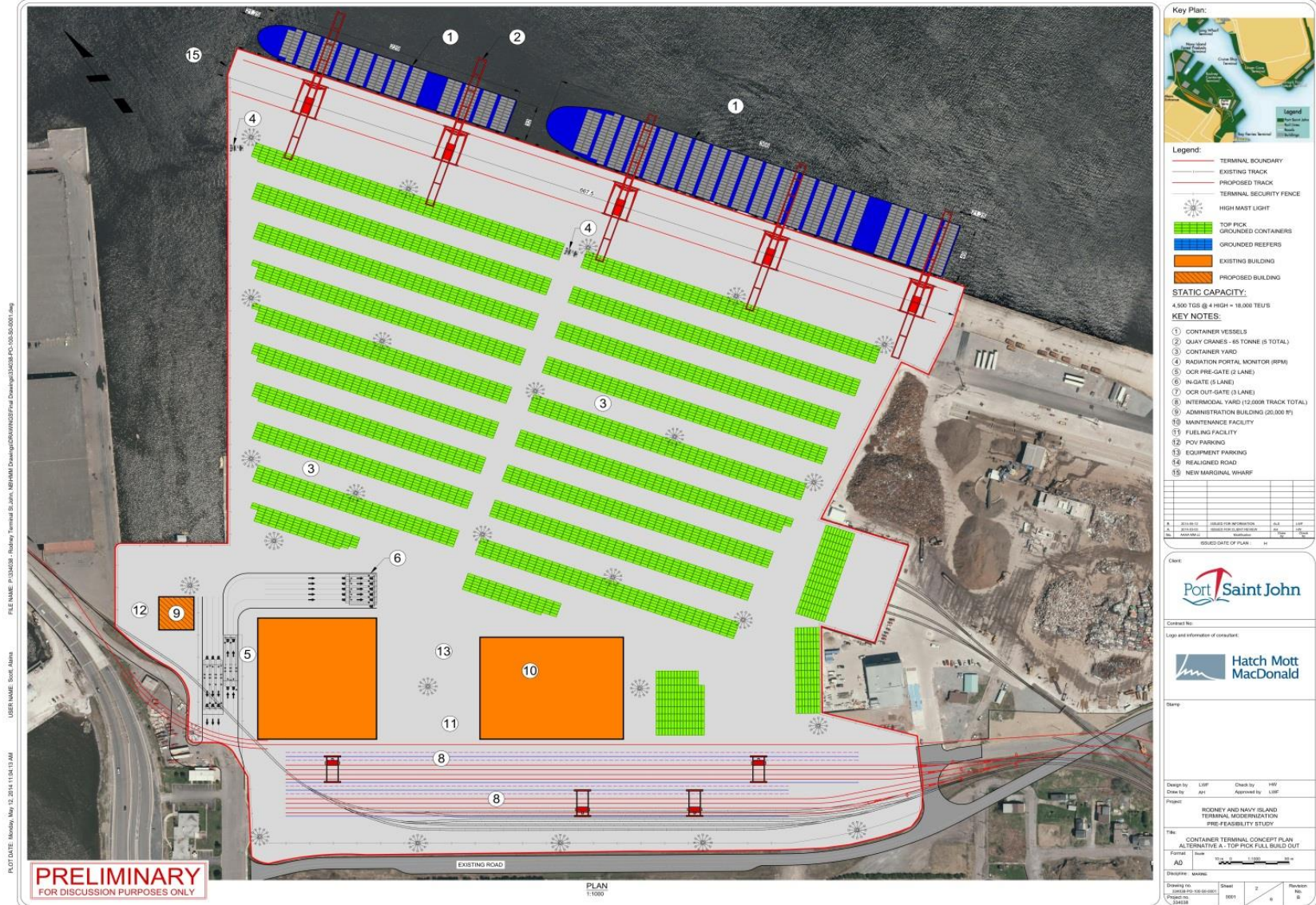
Discipline: ARCHITECTURE
Drawing No.: 20140912-000008
Project No.: 20140912-000008
Sheet No.: 0005 Revision No.: A

FILE NAME: C:\work\hgm\terminal\moodle\460806\dwg\460806\460806-03-10-2014-001.dwg
USER NAME: Soud, Azeem
PLOT DATE: Thursday, May 22, 2014 12:07:17 PM

PRELIMINARY
FOR DISCUSSION PURPOSES ONLY

PLAN
1:1000

Future Capacity



West Side Modernization



Modernization Costs & Benefits

Costs

(over 8 fiscal years)

Wharf & Terminal Construction	\$167 M
Main Channel Deepening	\$38 M
Total	\$205 M

Benefits

(over 8 fiscal years)

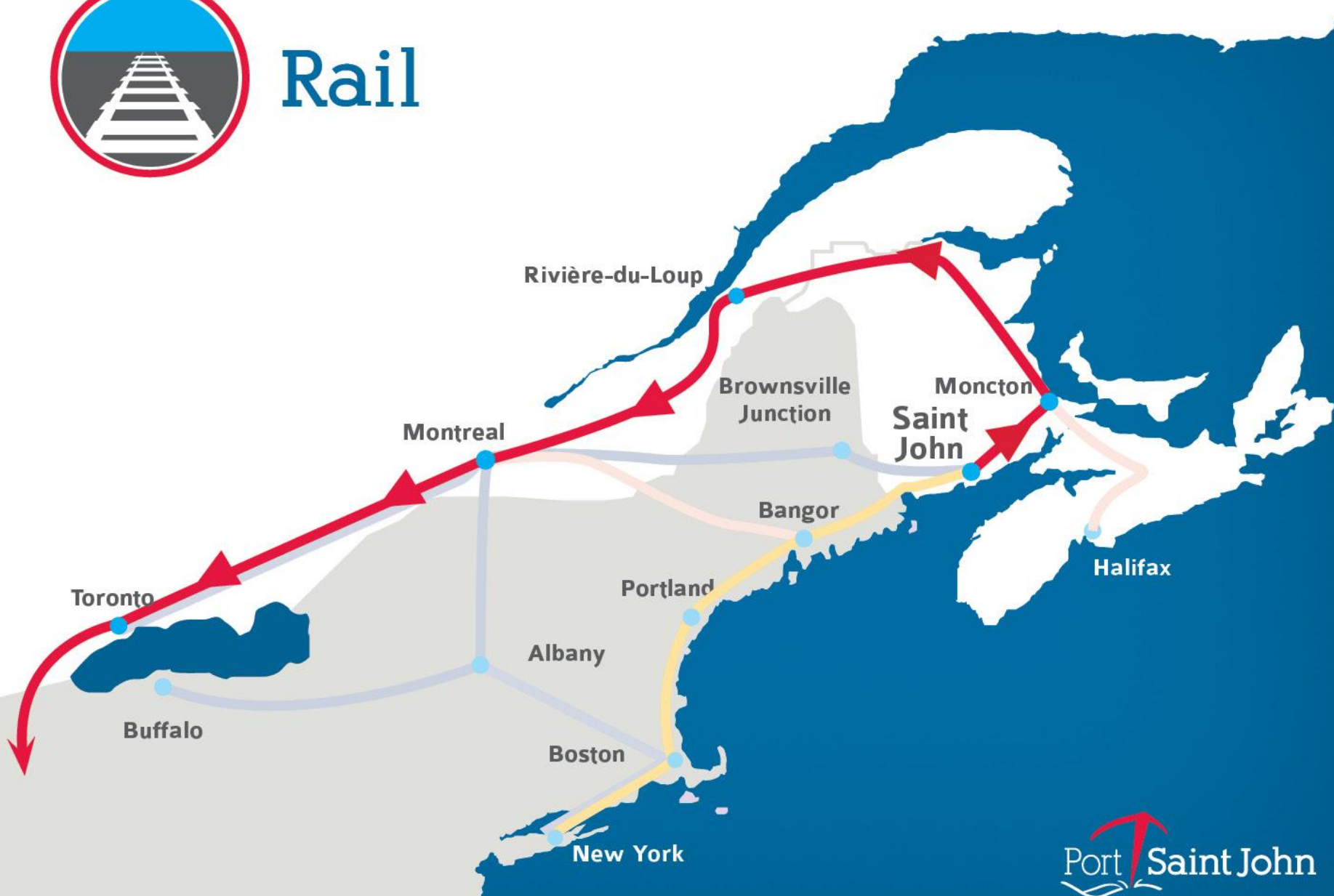
Boost to Provincial GDP	\$152 M
Boost to labour income	\$109.6 M
Generation of tax revenue	\$35.4 M
Generate consumer spending	\$84 M
Total Benefits	\$381 M

Further Detail on Employment Benefits

- Creation of 2,245 person years' worth of employment over the seven-year construction period
- Creation of 1,093 direct & indirect jobs over the life of the terminal once project completes



Rail





Road



Serving over
30
communities
across the Province

Containers –
building blocks for
New Brunswick's
economy



Thank you

