



What's new at Link-Belt



**BORING???**

# CRANE FEST '15





# bauma 2016





# New Training Center



# New Training Center









# Dedicated classrooms



# Dedicated training bay





# Prototype / Quality Assurance







# The latest addition to the Rough Terrain Link-Belt Lineup...



# THE NEW **100RT**

100UST (90mt)  
Rough Terrain Crane









# 100|RT

## Specifications:

- 38-164.1 ft (11.5-50.0m) **six section** pin and latch boom
- 10-35-58 ft (17.6m) **three piece** on-board offsettable fly
- Two 16 ft (4.8m) **fly extensions** plus 58 ft (17.6m) offsettable fly [Total attachment length is 90 ft (27.4m)]
- 262 ft (79.8m) maximum **tip height**



## Specifications:

- 28,800 lbs (13.2mt) of **counterweight**
  - Three (3) 9,600lbs counterweight slabs
- **20,739 lbs** (92.25KN) maximum winch line pull
- 451 fpm (137.5m/min) maximum winch line speed
- Cummins **Tier 4F** diesel engine:
  - QSB 6.7L 260hp (201kW)  
730ft (990 Nm) lb @ 1500rpm
- 12/12 electric system
- 6-speed transmission
- Four 29.5x25 (34) tires



# 164.1 ft (50.0m) pin and latch boom



- 38-164.1 ft (11.5-50.0m) six section pin and latch boom
- Four (4) boom extend modes
- Load telescoping capability
- Remote controlled, single, and dual floodlights available
- Solar Powered Aviation package available
- Wind speed indicator

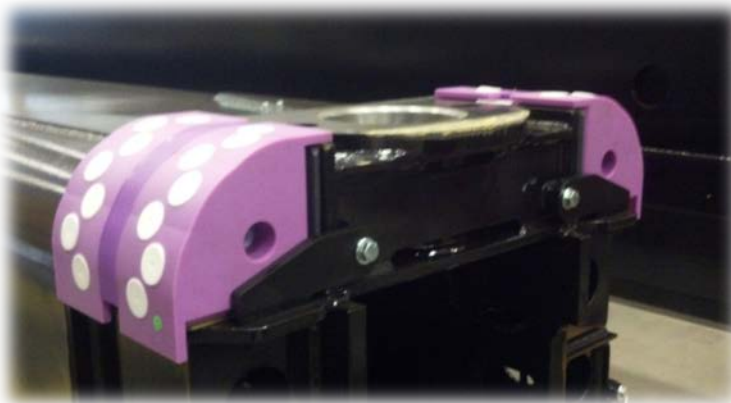




# Greaseless boom save time and reduces wear



- Teflon pucks **lubricate** the boom sections
- All sheaves feature **greaseless bearing**



# Three on-board attachments rolled into one

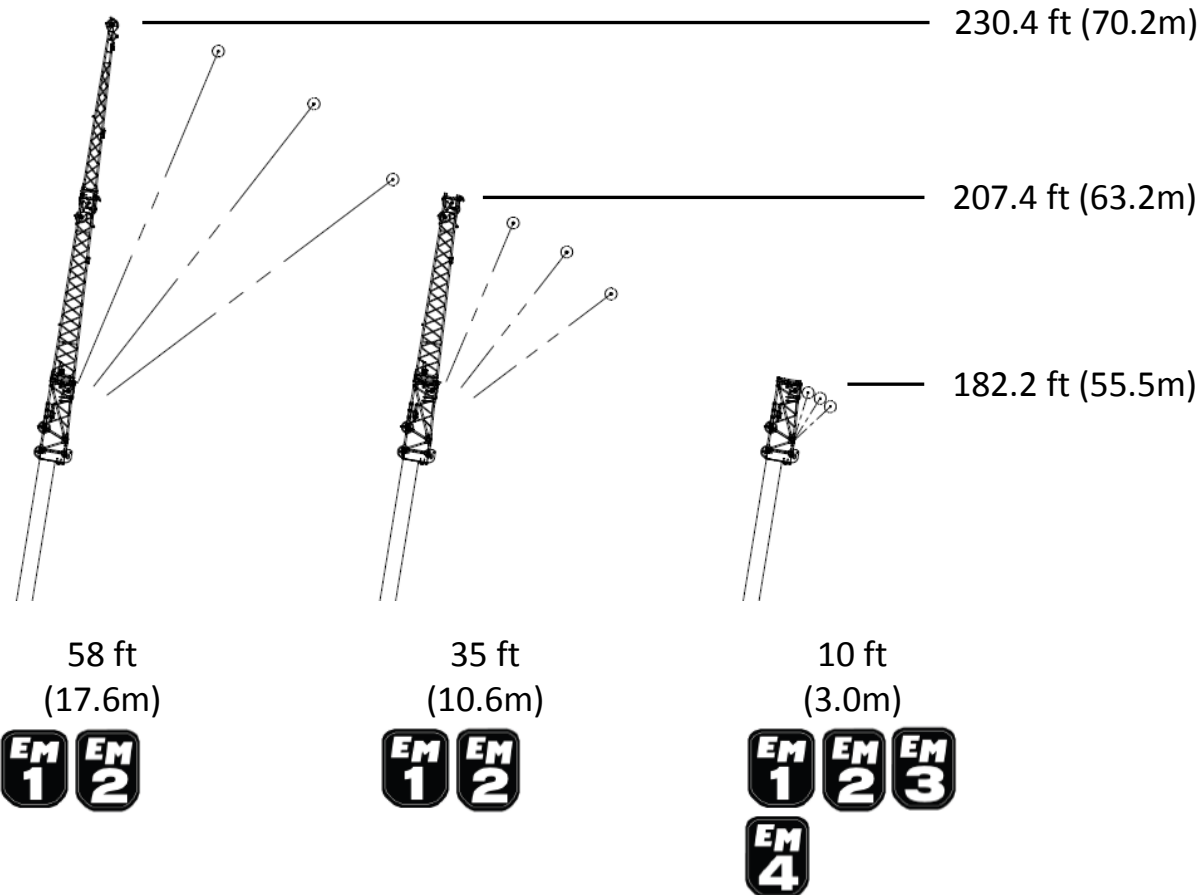
## Available 10-35-58 ft (17.6m) three piece on-board offsettable fly



- Manually offsettable at 2°, 15°, 30°, and 45°
- 10 ft (3m) **incorporated** into on-board fly
- **Two** 16 ft (4.9m) boom extensions available

# Three on-board attachments rolled into one

## Available 10-35-58 ft (17.6m) three piece on-board offsettable fly



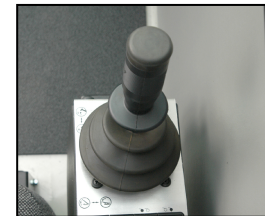
- Manually offsettable at 2°, 15°, 30°, and 45°
- No capacity deducts for stowed attachments
- Wind speed indicator mounting points
- Aviation package mounting points available



# Inside the New 100RT Cab



- **Dual** or **single axis** electronic controllers available
- Foot pedal for boom telescope
- Free swing
- Power down boom hoist
- **Operator's Tilting Cab 0° - 20°**
- **Air Conditioning standard**
- AM/FM radio with Bluetooth



Upper Cameras that automatically lets you view winch operation, swing, and backup



**Winch Camera**



**Backup Camera**



**Swing Camera**



**Monitor**





# Centralized Pressure Check and Grease Bank



Allows operator to check eight (8) pressures and grease four (4) different points from **one centralized location** on the upper frame.

Boom foot pins and cab tilt cylinder greaseless  
(\* Boom foot grease points will be removed from Bank)



# Upper Features:

- Upper work platform & guardrail
- OSHA approved drum rotation direction indication (DRDI)
- LED Work Lights - Available
- Hydraulic Counterweight Removal - Standard



# LED Lights



Lights for Rear Access



Outrigger Working Lights



Headlights and Turn Signals



Lights for Electrical Access



Backup and Brake Lights



# LED Lights

3 Upper Work Lights (Available)

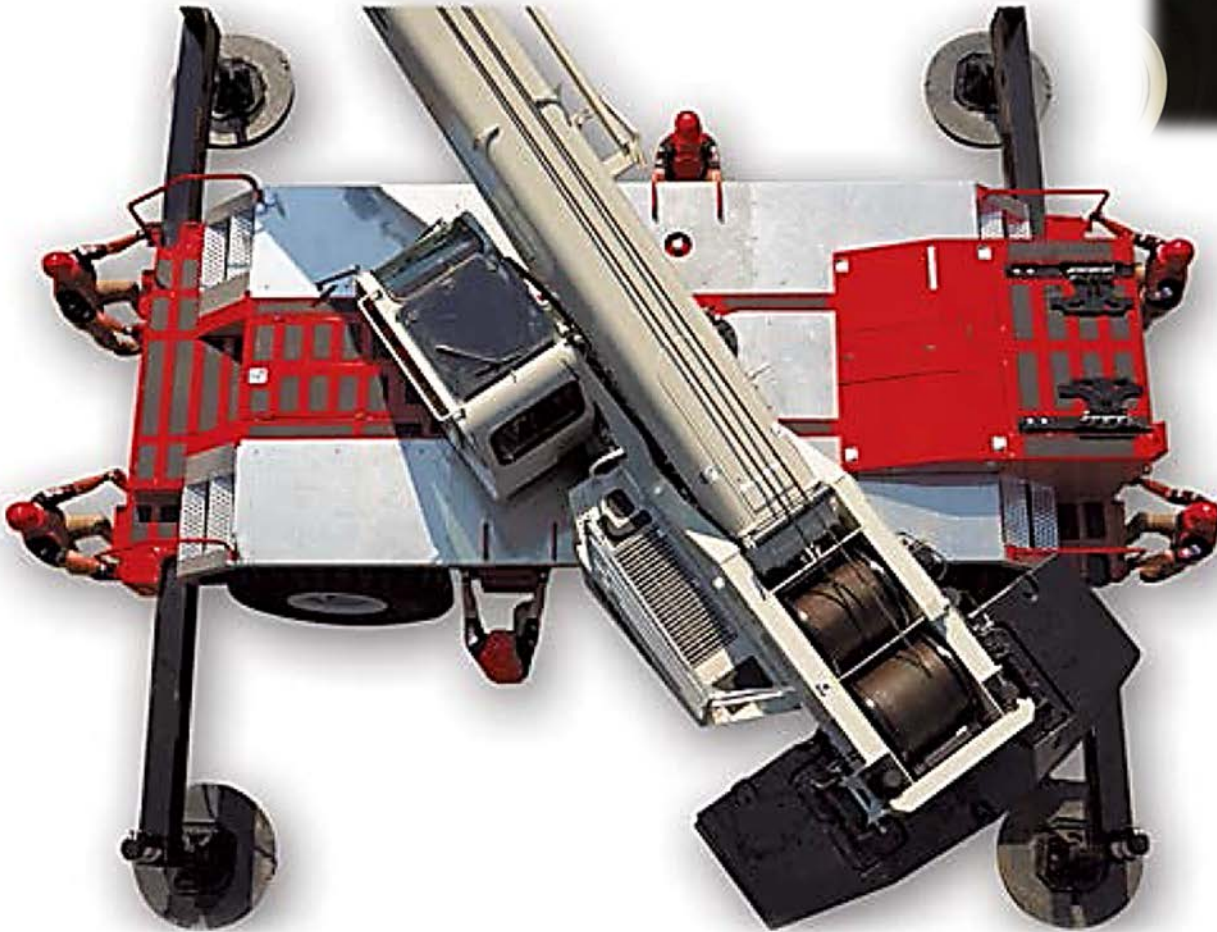


Upper Cab Bar Light (Available)





# Tier 4F and Still Maintained Six Points of Access



# Unmatched transport flexibility & jobsite travel

## 100RT

Transport Weight  
**93,516 lbs**

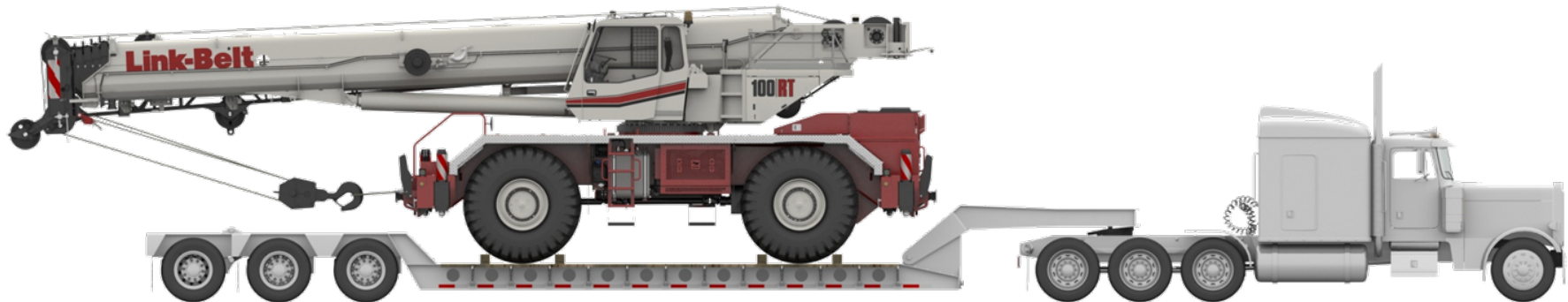
Overall Transport  
Height less than **14'6"**

## Center of Gravity

100RT: 1' 1" behind CL of Rotation  
RTC-8090 II: 1'6" behind CL of Rotation  
(100RT moved forward 5")

## RTC-8090 II

Similar Equipped  
Transport Weight  
**86,333 lbs**



Travels on beam or deck trailer with a 26' well

## 100 RT Transport Weight of 93,516 lbs includes:

- 6-Section Boom
- Outrigger Beams
- Main & Aux Winches with Wire Rope & Cable Followers
- 10'-35'-58' 3-piece fly stowed
- No Counterweight
- 100 ton Hook Block
- 10 ton Hook Ball
- Aux Lifting Sheave
- Full Tank of Fuel









# TCC-1400

140 Ton ( 127mt)

Telescopic Crawler Crane



# INTRODUCING



# TEC 1400





# TCC 1400



## Basic Specifications

- 140 US Ton (127mt) Base Rating
- 42.3'-195.4' (12.9 – 59.5m) 6-Section Pin and Latch Boom
- 10'-31' -55' (3.0-9.4-16.7m) Three Piece Bi-Fold On-Board Offset Fly
- 257' (78.5m) Maximum Tip Height
- 320hp Cummins QSL 9 Tier 4 Final Engine
- 22,380lb (10,151kg) Max Line Pull
- 537fpm (163.7m/min) High Line Speed
- 7/8" Category 1 (ZB) Wire Rope

# ***NEW*** - 4° List Capacities



# On-Board Attachment Options

- Available 10'-31'-55' (3.0-9.4-16.7m) 3-Piece, Bi-Fold, Offsettable Fly
  - Manually Offsets at 0°, 15°, 30° & 45°
  - No Deducts in Capacity for Stowed Attachments
- 10' (3.0m) Fly superior performance for single load, two load line operations
  - 24 Ton Capacity



**New and improved fly pinning designed for easy and efficient assembly/dis-assembly method!**



# Operator's Cab

- Spacious Cab
- 0°-20° Tilt Cab
- Climate Control, A/C & Heat Standard
- Hydraulic pilot operated controls
- Single Axis Controllers
  - Optional Dual Axis Controllers
  - Mechanical Drum Rotation Indicators
- Sliding front and rear window
- Roof Hatch
- Remote Control Flood Lights
- Optional Rotating Amber Beacon
- CE mark option
- Free Swing



# Upper Features

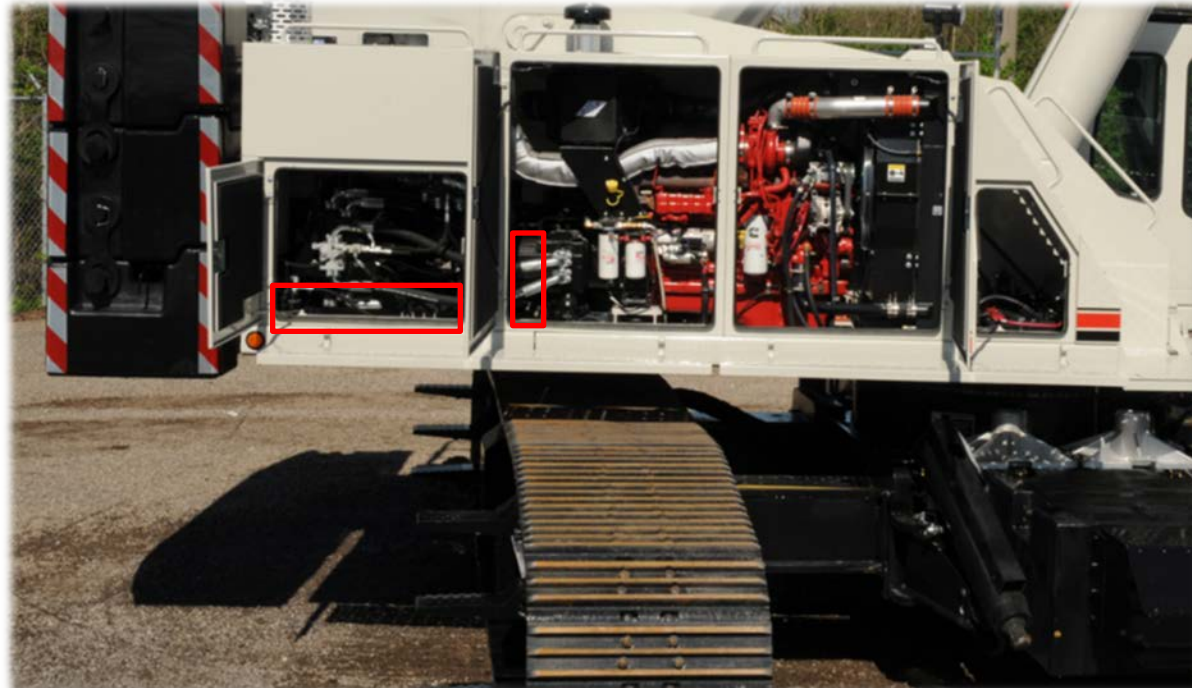


- Standard Upper Fold-down Guard Rails and Catwalks
- Matching Performance on Main and Auxiliary Hoist Drums
  - 22,380lbs Max Line Pull
  - 268 fpm Maximum Line Speed Under Load
  - 537 fpm Maximum No Load Line Speed
  - 951' Total Storage Capacity
- Standard Rear view and Winch view cameras
- Optional remote control house flood light

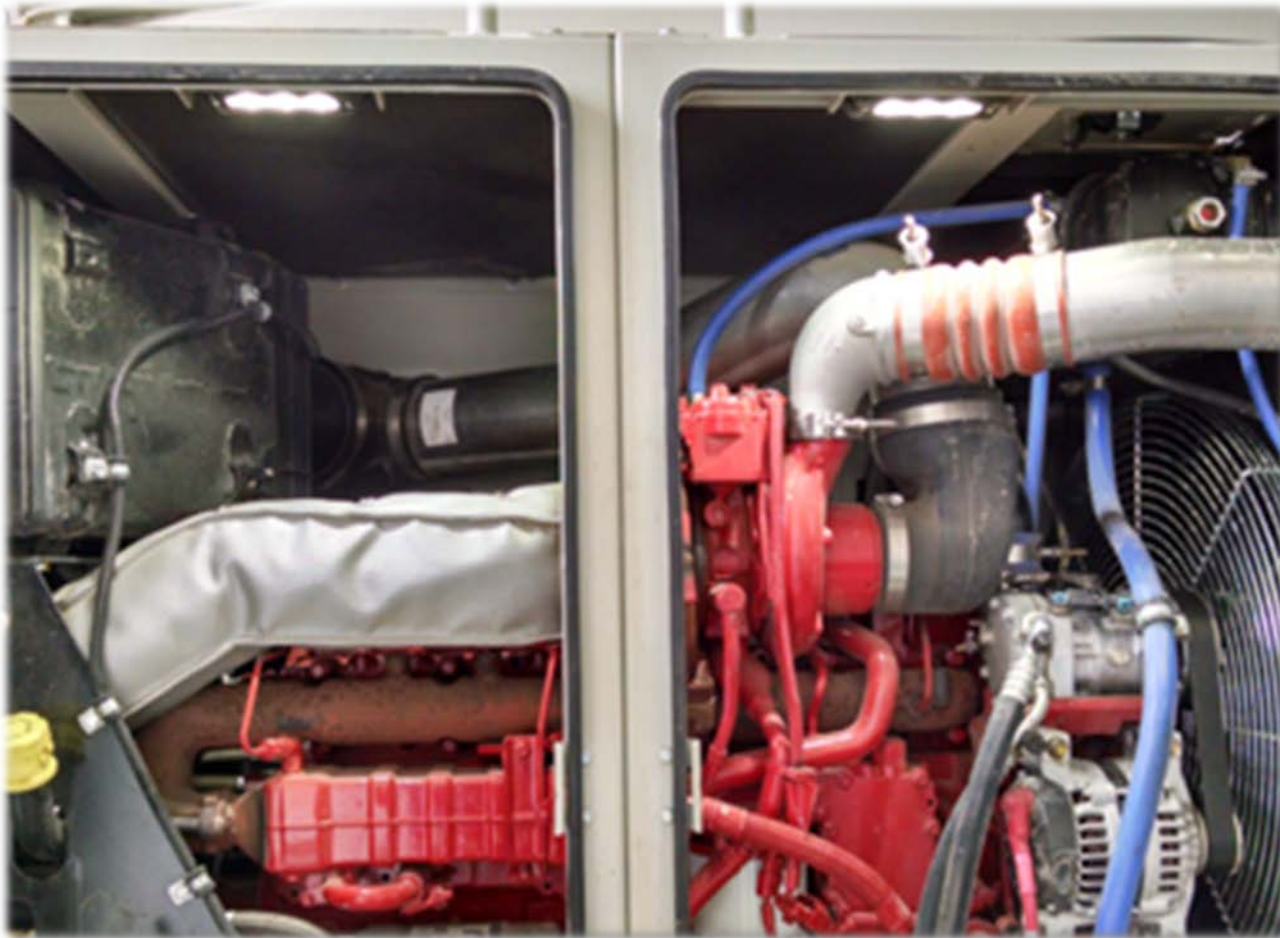


# Serviceability Features

- Centralized Grease Bank– Located on Upper and Carbody, easily accessible for routine greasing
- Hydraulic Pressure Transducer – Readouts On *PULSE* display for service cost and time savings
- Excellent Engine Compartment and Filter Access



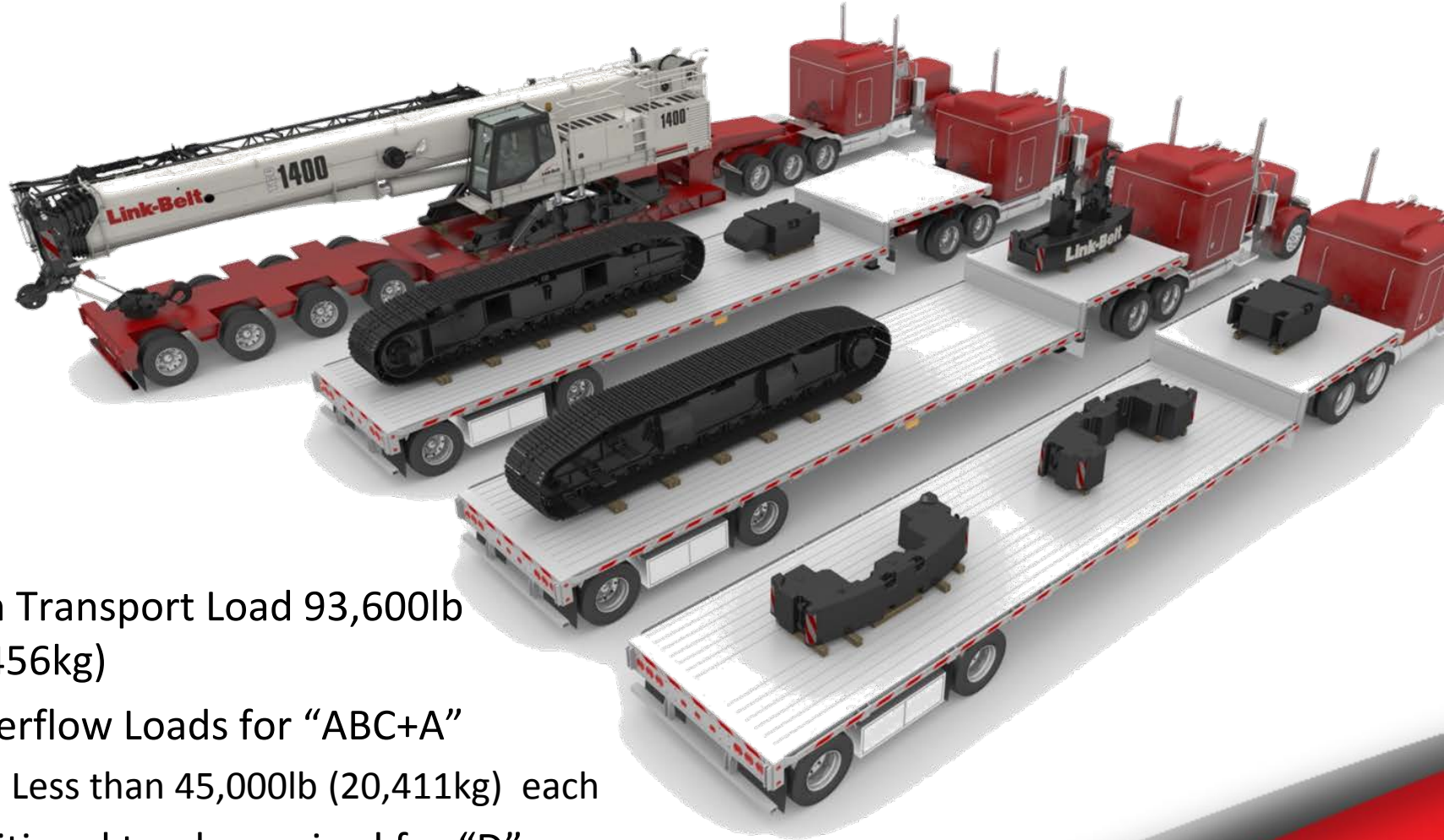
# Serviceability Features



**NEW** LED Engine Compartment Lighting



# Transportation



- Main Transport Load 93,600lb (42,456kg)
- 3 Overflow Loads for “ABC+A”
  - 1) Less than 45,000lb (20,411kg) each
- Additional truck required for “D” weight and rigging
  - 1) 6,000lb (2,721kg)







**HTC 86110**

110 Ton (*100.0mt*)

**Telescopic Hydraulic Truck Crane**



# Link-Belt truck cranes



Telescopic Truck



# HTC 86110



# HTC 86110

110 US-ton  
100 metric ton





# 86110

110 US-ton  
100 metric ton

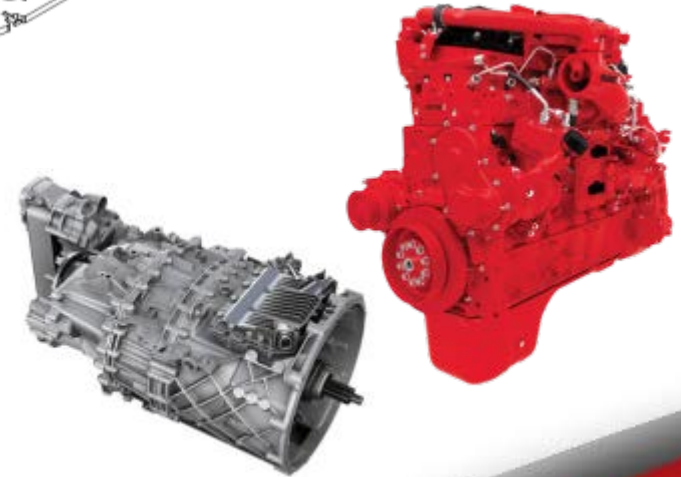
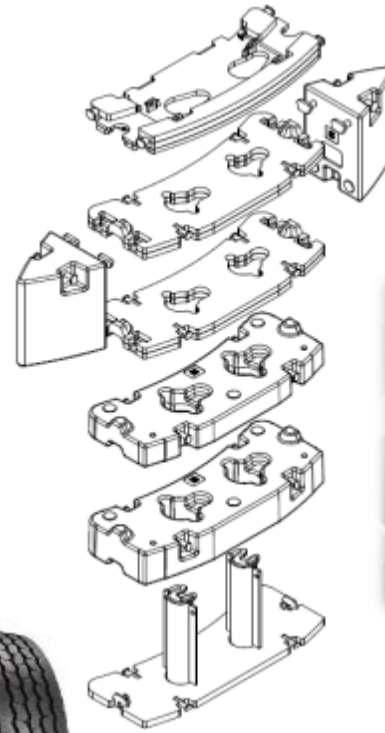
## Specifications:

- 38-164 ft (11.5-50.0m) **six section** pin and latch boom
- 10-35-58 ft (3.0-10.6-17.6m) **three piece** on-board offsettable fly
- Two 16 ft (4.8m) **boom extensions** plus 58 ft (17.6m) offsettable fly [Total attachment length is 90 ft (27.4m)]
- 261.6 ft (79.7m) maximum **tip height**



## Specifications:

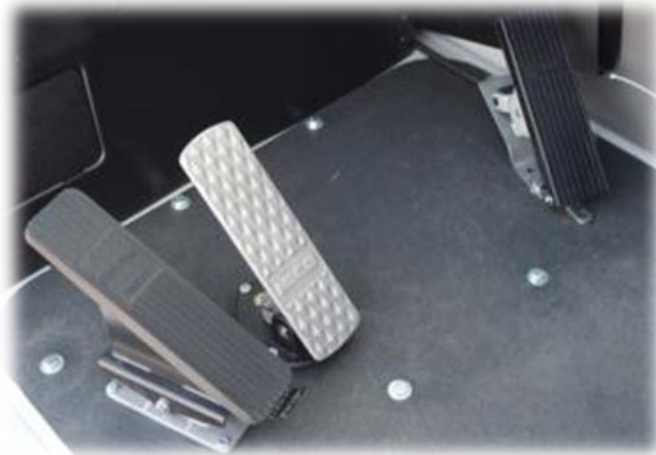
- 48,600 lbs (22.0mt) of counterweight
- 20,739 lbs (92.25kN) maximum winch line pull
- 495 fpm (150.8m/min) maximum winch line speed
- Cummins ISX12 diesel engine:
  - 450 hp (336kW)
  - 1,550 ft-lb (2 102 Nm)
- ZF As-Tronic transmission
  - 12 forward and 2 reverse gears
- Four 445/65R22.5 front and eight 315/80R22.5 rear tires on aluminum wheels





# Comfortable working conditions can make operators more productive

- Tilting from **0° to 20°**
- Pull-out cabwalk
- Large windows provide a panoramic view
- Sliding right and rear windows
- Heat and **air-conditioning** standard
- Light and responsive **dual or single axis electronic** controllers
- Floor plate is treated with an industrial coating
- Foot pedal for **boom telescope**
- Free swing
- Power down boom hoist



# Comfortable working conditions can make operators more productive

- Upper **work platform** & guardrail
- AM/FM radio with **Bluetooth**
- Amber strobe light available
- Forward mounted **LED** work lights standard
- Additional work lights available





Upper Cameras that automatically lets you view winch operation and swing



Winch Camera



Swing Camera



Monitor





Carrier Cameras that automatically lets you view backing up and when making a right turn



**Right-side Camera**



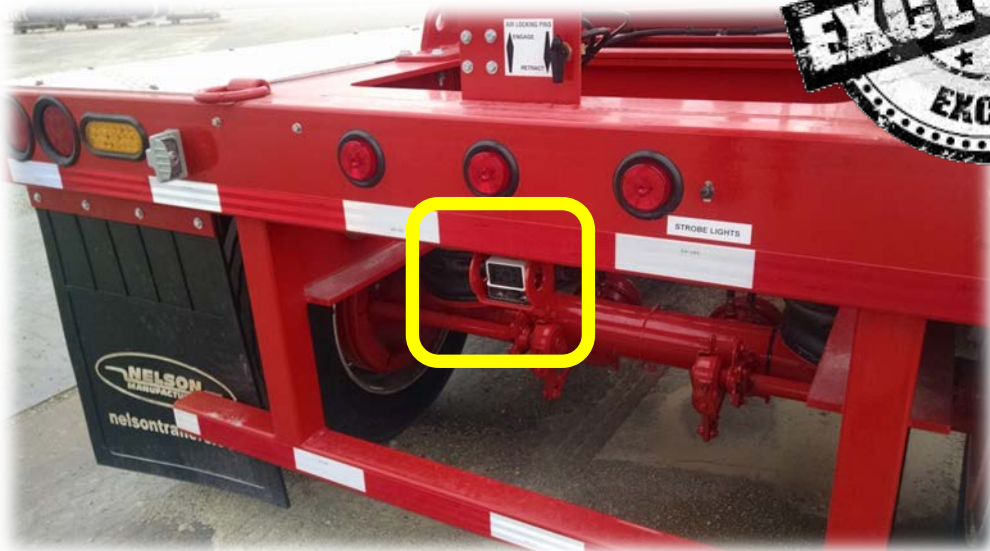
**Monitor**



**Backup Camera**



Carrier Cameras that automatically lets you view backing up and when making a right turn



Dolly Camera

Monitor



# Three on-board attachments rolled into one

## Available 10 ft (3.0m) on-board offsettable fly



- Concept introduced by Link-Belt at Con Expo 2008
- Manually offsettable at 0°, 15°, 30°, and 45°
- Over **23 USt (20.8mt)** of capacity
- Reeve up to 4 parts
- One load/two load line lifts
- Charted like an **auxiliary lifting sheave**



CRANE RENTAL  
ASSOCIATION OF CANADA  

---

ASSOCIATION CANADIENNE DES  
LOCATEURS DE GRUES

What's new at Link-Belt

