

Your Trusted Partner for Cranes



Copyright Liebherr 2015

Liebherr Cranes – Innovation – Quality - Safety



Since the earliest days
Liebherr has always designed
and built our cranes to the highest
standards possible.

For 66 years now
we have been
building cranes



Copyright Liebherr 2015

Liebherr – the family business

1949

Foundation by
Dr. Hans Liebherr



Since **1993** under
the leadership of
the sister and
brother



Since January **2012**, the third generation has also
been involved in managing individual divisions of
the Group.



Copyright Liebherr 2015

Divisions of the Liebherr-International



Earthmoving



Mining



Mobile cranes



Tower cranes



Concrete technology



Maritime cranes



Aerospace and transportation systems



Machine tools and automation systems



Domestic appliances



Components



Hotels

Investment World-wide

Liebherr has invested this year in new state of the art facilities in to improve the total customer experience.

- Switzerland
- Brazil
- Russia
- India
- Australia
- Canada
- Germany



Total Global Investments 2014 Euro 800 million

New Global Parts Distribution Centre

Liebherr-Logistics GmbH, service provider in Kirchdorf Germany

Centre will supply spare parts for Liebherr machines around the world

Open now to serve our customers better



Copyright Liebherr 2015

Liebherr-Werk Ehingen GmbH

Mobile and crawler cranes



Factory site 850,000 m²
Covered floor area 240,000 m²

Product range – Liebherr-Werk Ehingen

LTM cranes

All-terrain cranes with telescopic boom
21 types



LTC cranes

Compact all-terrain cranes with telescopic boom
1 type



LTF cranes

Truck-mounted telescopic cranes
3 types



LG cranes

All-terrain cranes with lattice boom
1 type



LTR cranes

Crawler cranes with telescopic boom
3 types



LR cranes

Crawler cranes with lattice boom
8 types



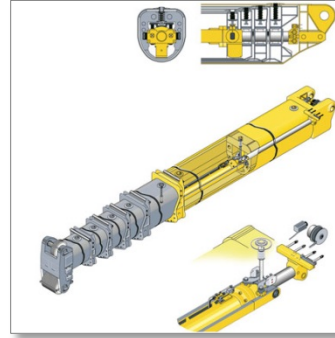
Milestones



Year of foundation
1969



333 cranes for Russia
1981



Telescoping technology
1995



Strongest crawler crane worldwide
2012

1977

First AT crane LTM 1025



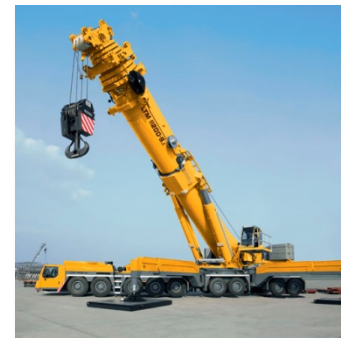
1989

LICCON crane control



2007

Strongest AT crane worldwide



Service locations in Canada



Service and repair shops worldwide

Service Strategy

- Worldwide service at the highest level
- Service locations worldwide located close to our customers

Canada



Great Britain



USA



Russia



UAE



Operation range – diversification in use

Construction sector



Loading works



Industry



Bridge construction



Wind power plants



Petro-chemistry

Operation range – diversification in use

Heavy duty assemblies



Tower crane assemblies



Industry



Steel construction



Fire brigade



Military

Technological competence

- This one factory has more than 250 engineers in the technical sector



Copyright Liebherr 2015

Technological competence

- Liebherr is constantly improving quality.
- Inspection of all materials and all welding seams is standard.
- Each welding seam is tested to be of the highest quality.
- In-house welding competence centre is a key part of training staff.



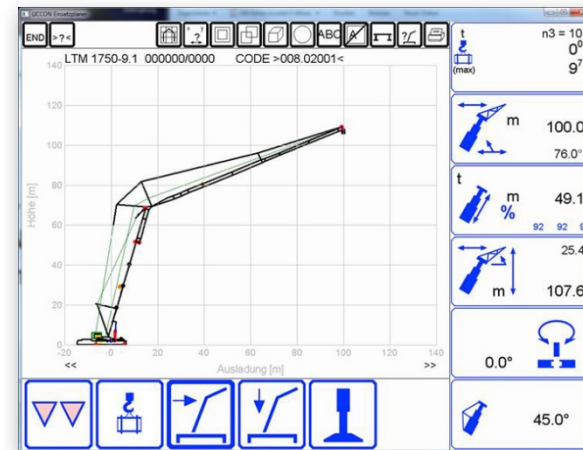
Innovations

Control and monitoring of all crane functions with the Liebherr in-house developed LICCON computer system

- **High comfort**
e.g. with the BTT Bluetooth Terminal or the wireless remote control



- **High safety**
e.g. with the LICCON work planner



PowerBoom

Load capacity increases of more than 50% with relatively little effort



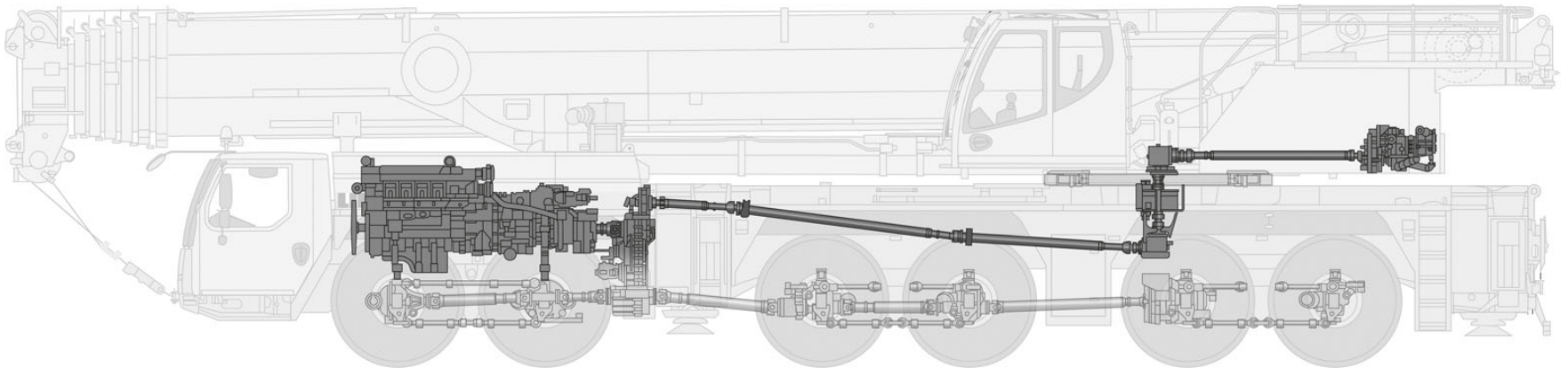
Copyright Liebherr 2015

Latest innovations

Innovative crane drive concept with just one engine and a mechanical shaft

Benefits:

- **Cost and weight reduction**
 - **98% efficiency in the drivetrain no loss of power**
 - **Simple and better**
 - **Reduction in maintenance and fuel costs**
- **Higher lifting capacities and/or longer booms due with the reduction in weight**

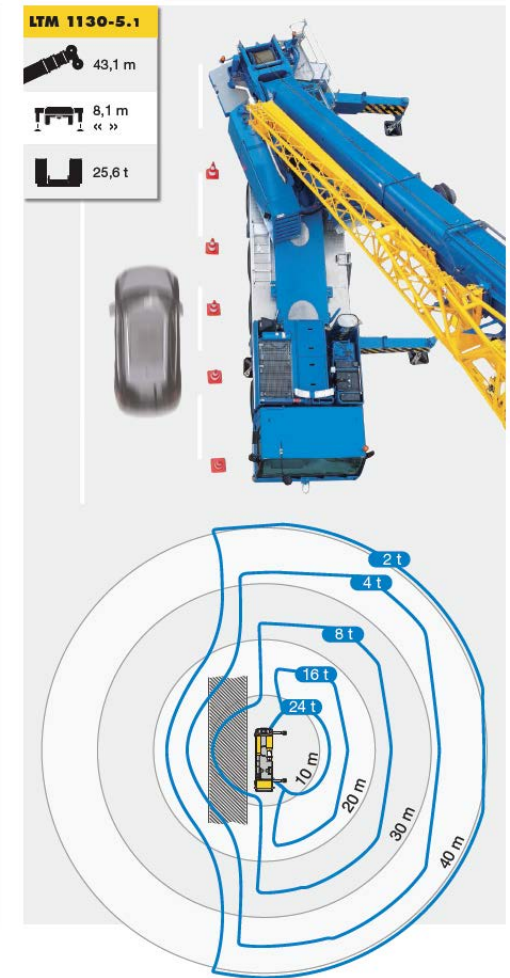


Latest innovations

VarioBase

Every individual crane outrigger support can be extended to any length – though this crane feature operation is made safer by the advanced load moment limiter.

- Improved safety !!!
- More lifting capacity and larger working range



Extensive Training Centres

- Training of more than 8,700 persons annually
- Approximately 600 training courses with around 80 different topics
- Training topics
 - Product and technology
 - Crane operation in practice
 - Crane operator training
 - Crane maintenance and trouble shooting
 - Information and data processing



Our People

- **Think Safety**
- **At Liebherr quality, functionality and safety always come first.**
- **Every, individual crane is continuously tested in depth during the production process and at then retested at the acceptance area.**
- **Every, individual crane is analysed statically with 1.5-fold safety and is being tested at the acceptance area with 25 % overload**



Our employees – the key to success

- **Long-Term Employees are the Standard at Liebherr**
→ Ensuring the cranes get built to the highest quality.
- **Good education and ongoing training for all employees is part of the Liebherr way.**
- **People that care and are proud of their work simply build better cranes for our customers**



Copyright Liebherr 2015

What Does a Quality Crane Partner Provide You

- Technology
- Safety
- Quality
- Parts
- Service
- Support



Liebherr your long-term partner in cranes.

Did You Know Each Year This Factory

- Uses 160,000 different parts in series and spare parts
- Daily 140 – 160 trucks are off loaded at the factory.
- 210,000 tonnes material per year are used.
- 50,000 Sea-Freight Container-boxes per year are utilized.
- 325 km lattice tubes,
650 km hydraulic hoses,
325 km hydraulic pipes per year
- Crane documentation is written in 31 languages



Copyright Liebherr 2015

Thank you for your attention

Our Core Values

Highest quality in everything we do

We are innovative

We are independent

We accept responsibility

We are a trustworthy partner

Our employees are a key factor in our success

